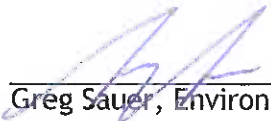


4.0 Application Chronology

Date Application Received: November 5, 2009
Advisory Planning Commission: May 25, 2010
Initial Consideration/First Reading: January 17, 2011
Public Hearing: February 8, 2011
Additional Information Submitted: August 30, 2012
Initial Consideration/First Reading: October 1, 2012



Greg Sauer, Environment & Land Use Planner

Reviewed by:  Danielle Noble, Manager, Manager, Urban Land Use

Approved for Inclusion:  Shelley Gambacort, Director, Land Use Management

Attachments:
Map "A"

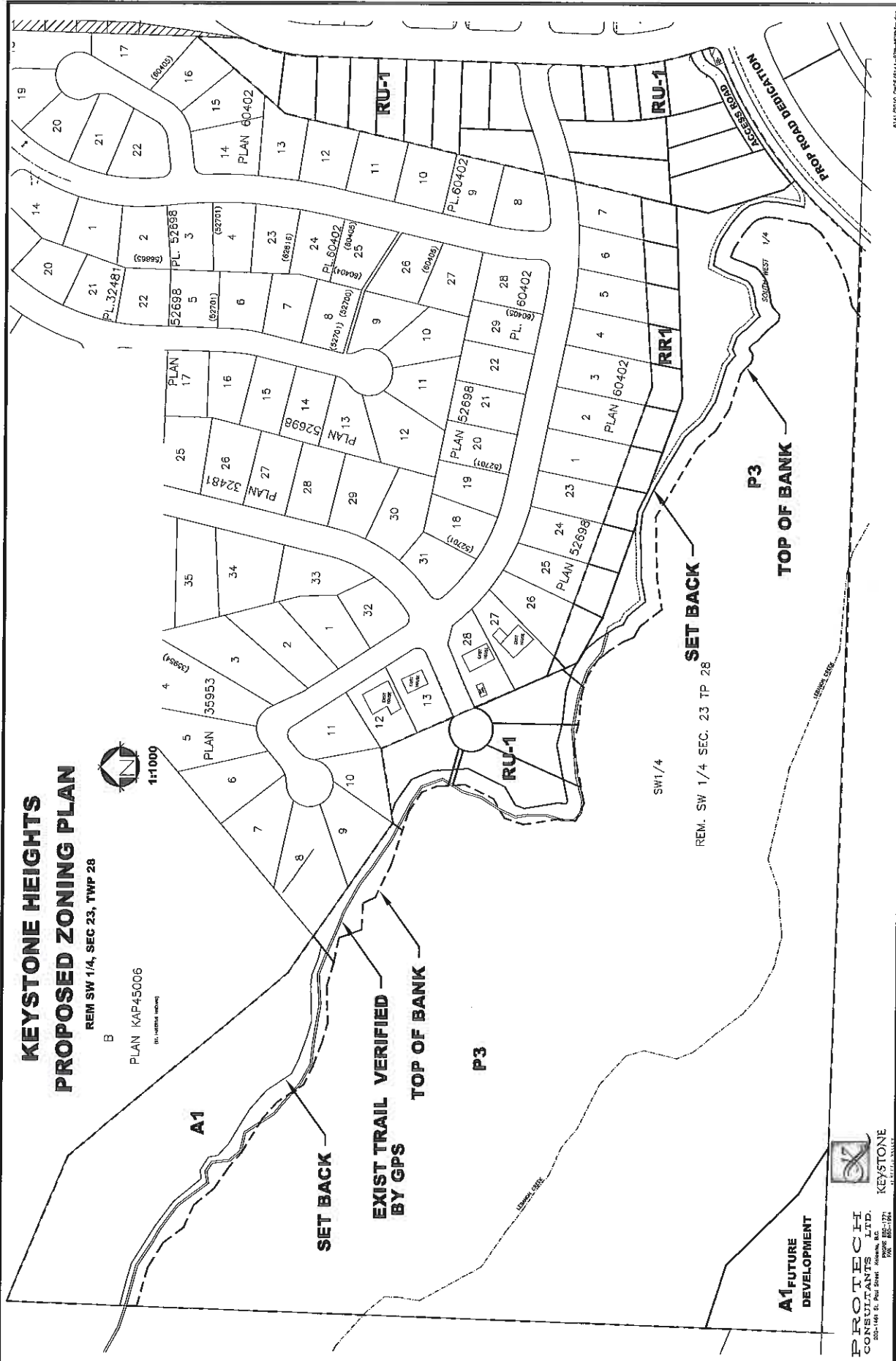
KEYSTONE HEIGHTS PROPOSED ZONING PLAN

REM SW 1/4, SEC 23, TWP 28



1:11000

PLAN KAP45006
(S.L. VARIOUS RECORDS)



A1 FUTURE DEVELOPMENT



PROTECH CONSULTANTS LTD.
250-14th St. Post Street
PO Box 885-1741
SHELLY, ALASKA

Map "A"